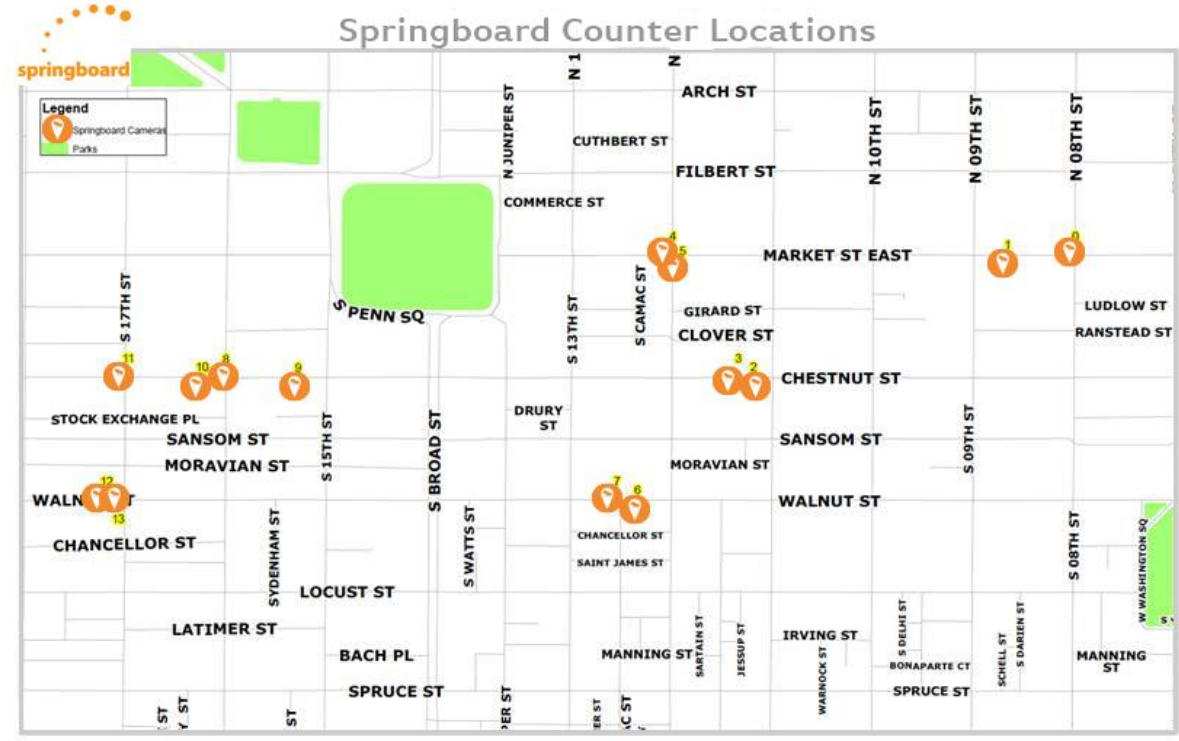


Map of Counting Locations



Example Camera Positions

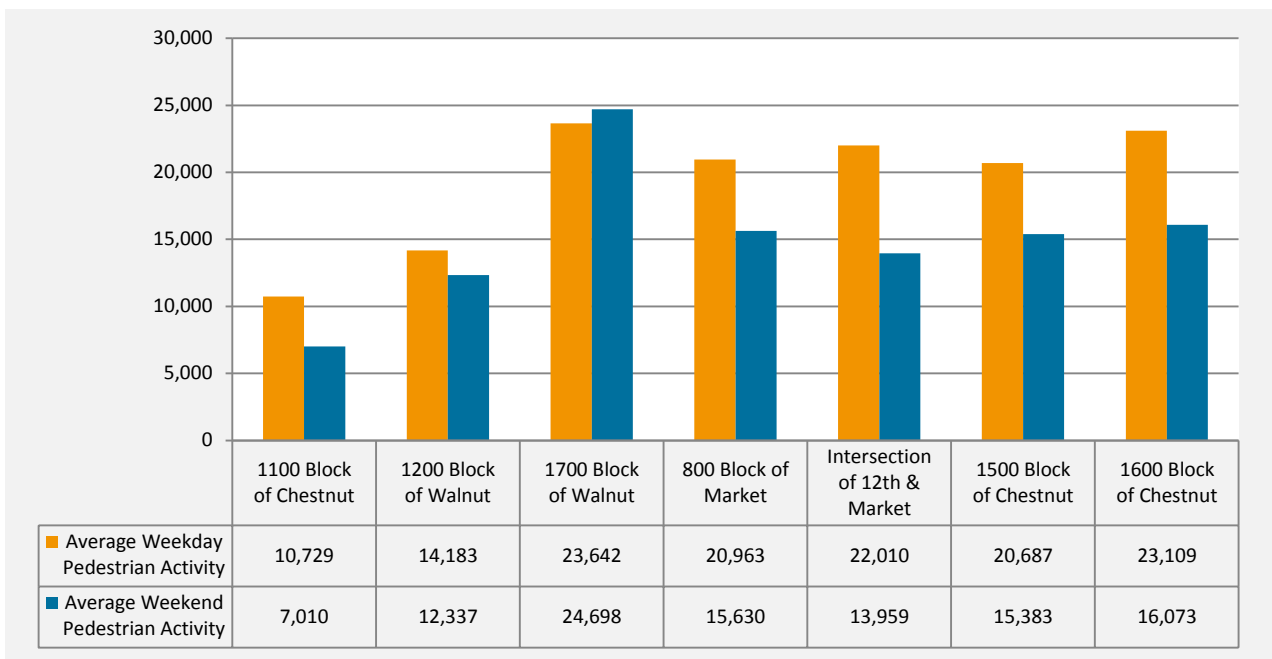




Headlines for August 2013

- Pedestrian activity in Center City Philadelphia was ▲ 6.6% compared to last month
- Pedestrian activity across New York was ▲ 9.4% compared to last month
- Pedestrian activity in Center City Philadelphia was ▲ 2.3% compared to same month last year
- Pedestrian activity across New York was ▲ 15.4% compared to same month last year

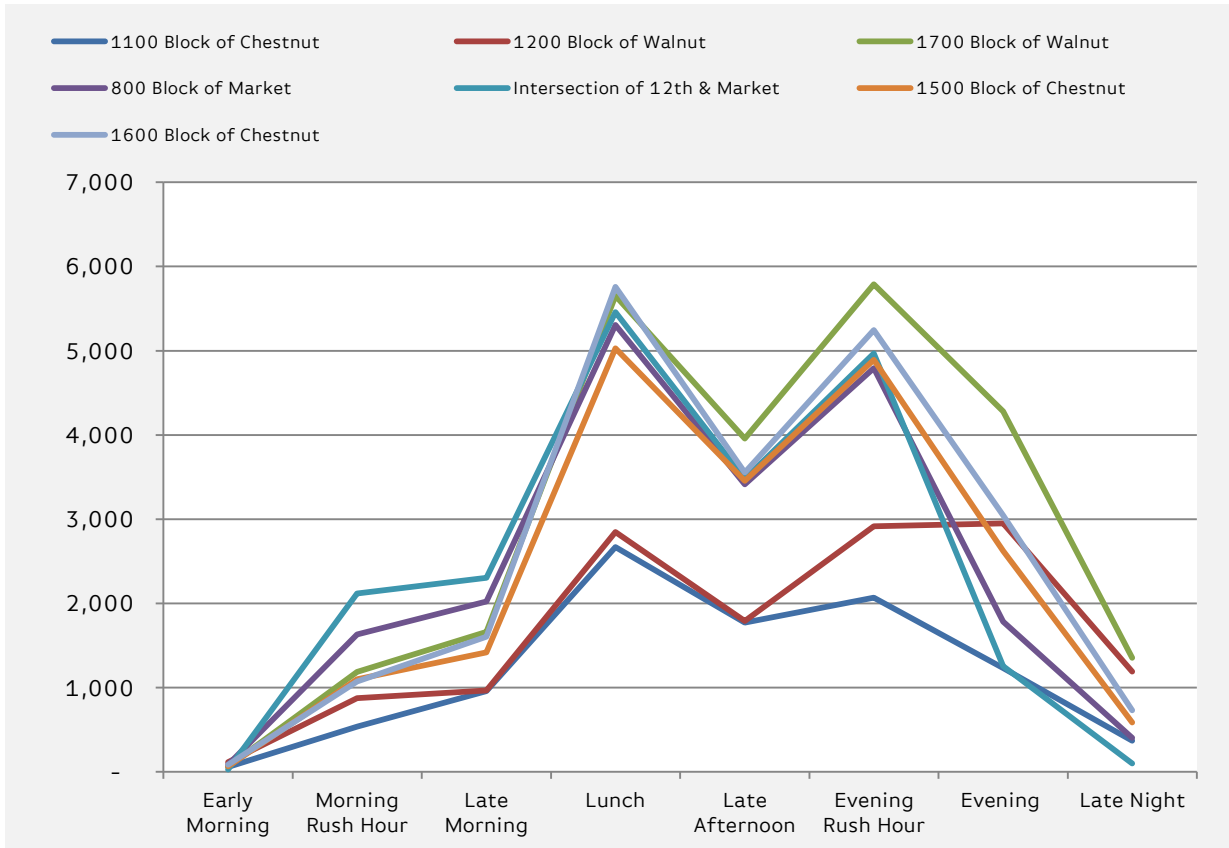
Average Daily Pedestrian Count – August 2013



	Average Weekday Pedestrian Activity		Average Weekend Pedestrian Activity	
	2013	2012	2013	2012
1100 Block of Chestnut	10,729	11,599	7,010	7,387
1200 Block of Walnut	14,183	13,313	12,337	11,590
1700 Block of Walnut	23,642	23,917	24,698	23,326
800 Block of Market	20,963	20,206	15,630	13,827
Intersection of 12th & Market	22,010	20,843	13,959	13,215
1500 Block of Chestnut	20,687	20,863	15,383	14,690
1600 Block of Chestnut	23,109	22,156	16,073	17,109



Average Daily Pedestrian Count by Time of Day
August 2013



	1100 Block of Chestnut		1200 Block of Walnut		1700 Block of Walnut		800 Block of Market		Intersection of 12th & Market		1500 Block of Chestnut		1600 Block of Chestnut	
	2013	2012	2013	2012	2013	2012	2013	2012	2013	2012	2013	2012	2013	2012
Early Morning	57	58	115	50	66	76	85	87	29	56	67	509	84	79
Morning RH*	539	623	876	887	1,187	1,295	1,632	1,651	2,117	2,267	1,100	1,602	1,072	1,040
Late Morning	960	1,070	967	943	1,662	1,760	2,025	1,969	2,306	2,154	1,418	1,836	1,605	1,502
Lunch	2,668	2,894	2,849	2,813	5,652	5,767	5,306	4,792	5,459	5,226	5,030	4,713	5,759	5,803
Late Afternoon	1,774	1,927	1,791	1,782	3,956	3,892	3,415	3,289	3,477	3,360	3,457	3,204	3,555	3,609
Evening RH*	2,069	2,243	2,916	2,824	5,789	5,680	4,792	4,400	4,970	4,495	4,893	4,226	5,247	5,171
Evening	1,233	1,241	2,950	2,507	4,278	4,139	1,782	1,789	1,255	991	2,622	1,835	3,044	2,754
Late Night	368	339	1,191	969	1,353	1,139	402	407	99	114	585	1,174	733	755

Time of Day Key

Early morning: 4am-6am

Morning RH: 6am-9am

Late Morning: 9am-11am

Lunch: 11am-2pm

Late Afternoon: 2pm-4pm

Evening RH: 4pm-7pm

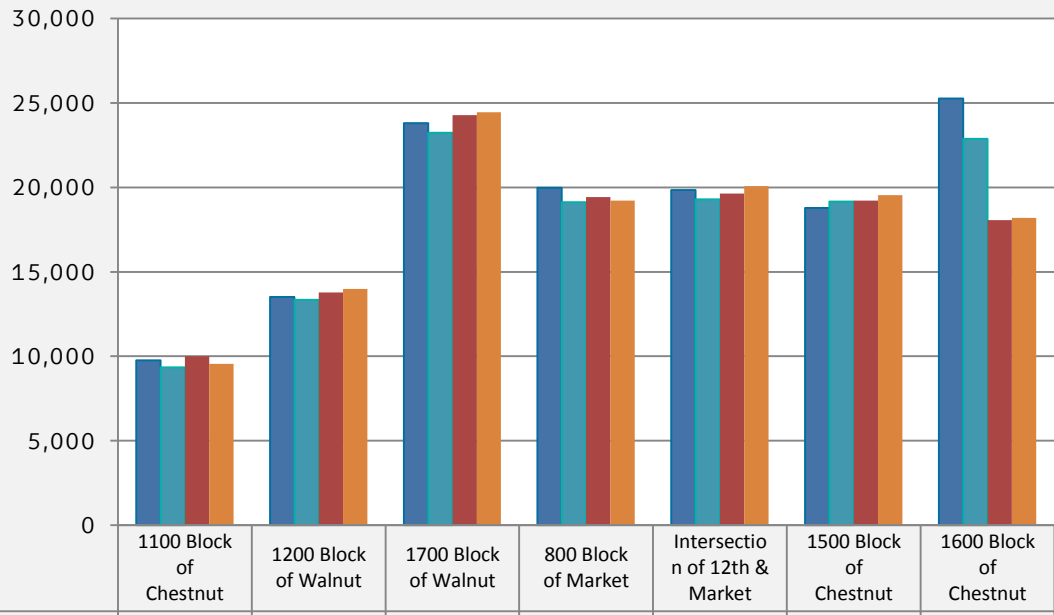
Evening: 7pm-11pm

Late Night: 11pm-4am

*N.B. RH stands for Rush Hour



Average Pedestrian Count by Week-August 2013

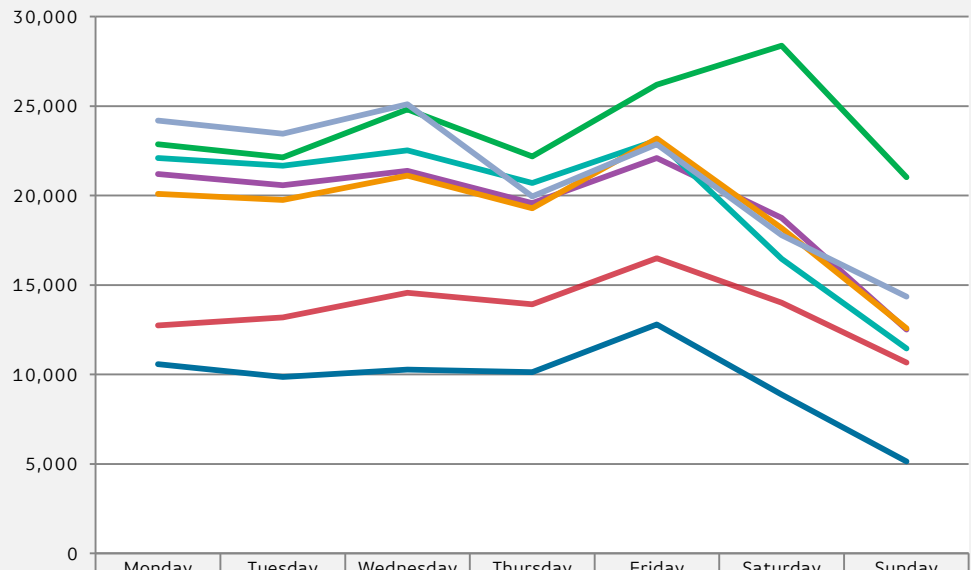


	1100 Block of Chestnut	1200 Block of Walnut	1700 Block of Walnut	800 Block of Market	Intersection of 12th & Market	1500 Block of Chestnut	1600 Block of Chestnut
■ Week 1-August 2013	9,759	13,506	23,812	19,981	19,836	18,774	25,255
■ Week 2-August 2013	9,347	13,352	23,229	19,120	19,295	19,164	22,876
■ Week 3-August 2013	10,009	13,787	24,282	19,433	19,630	19,209	18,065
■ Week 4-August 2013	9,551	13,979	24,450	19,224	20,078	19,538	18,201

	Week 1-August 2013		Week 2-August 2013		Week 3-August 2013		Week 4-August 2013	
	2013	2012	2013	2012	2013	2012	2013	2012
1100 Block of Chestnut	9,759	10,477	9,347	10,110	10,009	10,382	9,551	10,613
1200 Block of Walnut	13,506	12,883	13,352	12,313	13,787	12,279	13,979	13,810
1700 Block of Walnut	23,812	22,629	23,229	23,698	24,282	23,494	24,450	25,173
800 Block of Market	19,981	18,335	19,120	18,393	19,433	18,061	19,224	18,746
Intersection of 12th & Market	19,836	18,619	19,295	17,767	19,630	17,685	20,078	20,583
1500 Block of Chestnut	18,774	18,094	19,164	19,274	19,209	18,704	19,538	20,325
1600 Block of Chestnut	25,255	19,310	22,876	21,075	18,065	21,414	18,201	21,057



Average Daily Pedestrian Count by Day of the Week – August 2013



	Monday	Tuesday	Wednesday	Thursday	Friday	Saturday	Sunday
1100 Block of Chestnut	10,577	9,861	10,280	10,139	12,791	8,874	5,146
1200 Block of Walnut	12,745	13,184	14,561	13,928	16,500	14,014	10,660
1700 Block of Walnut	22,866	22,132	24,822	22,192	26,198	28,377	21,018
800 Block of Market	21,200	20,574	21,372	19,581	22,089	18,744	12,516
Intersection of 12th & Market	22,094	21,661	22,522	20,694	23,080	16,465	11,454
1500 Block of Chestnut	20,094	19,750	21,111	19,297	23,181	18,178	12,589
1600 Block of Chestnut	24,182	23,454	25,102	19,947	22,863	17,792	14,354