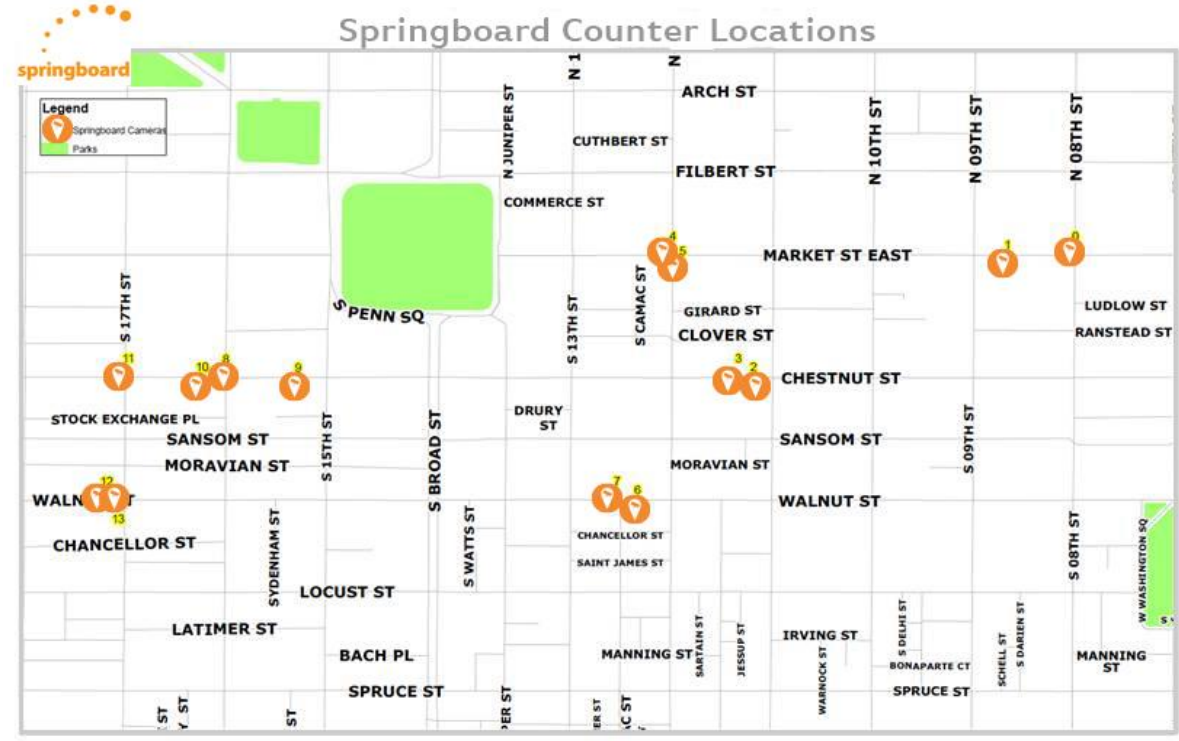


Map of Counting Locations



Example Camera Positions

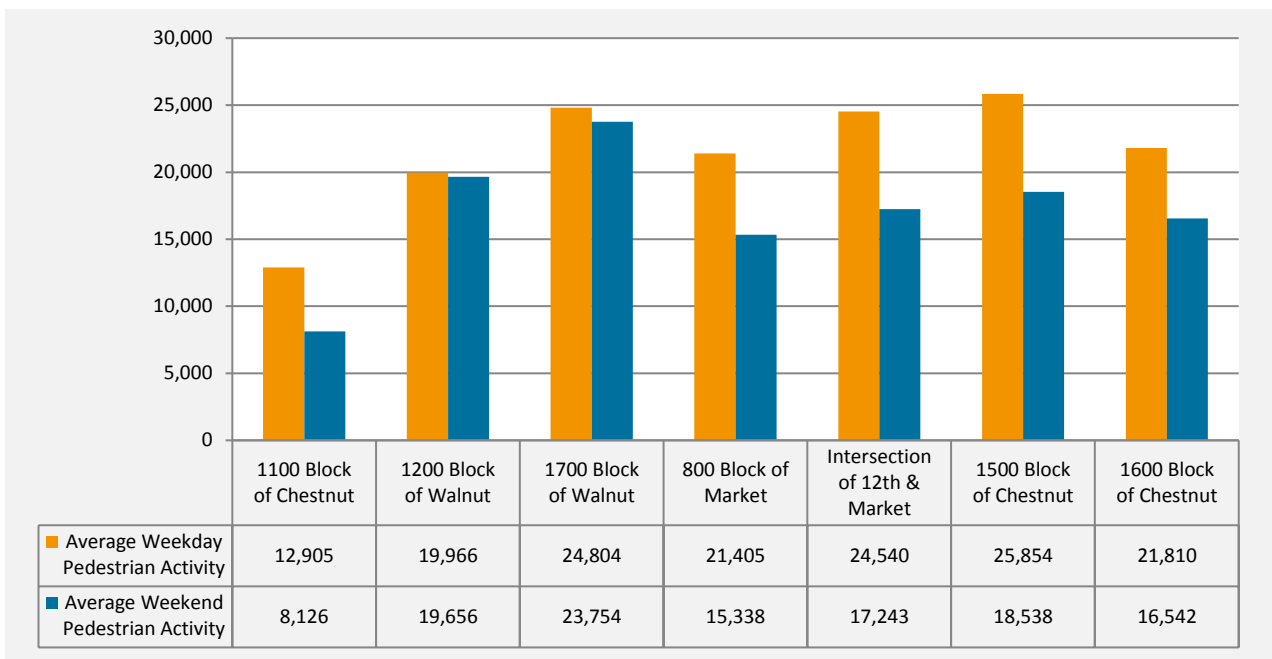




Headlines for August 2014

- Pedestrian activity in Center City Philadelphia was ▲ 14.1% compared to last month
- Pedestrian activity across New York was ▼ -4.2% compared to last month
- Pedestrian activity in Center City Philadelphia was ▲ 0.4% compared to same month last year
- Pedestrian activity across New York was ▼ -3.4% compared to same month last year

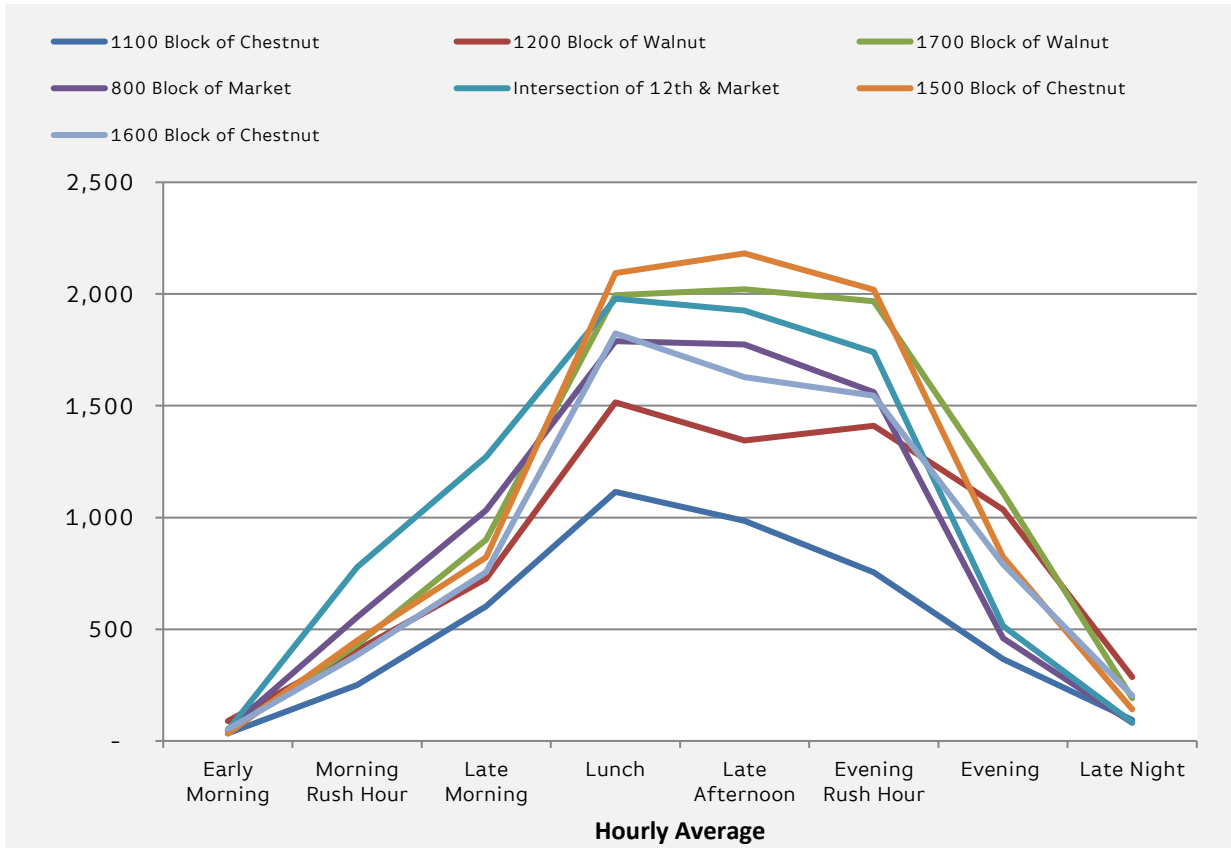
Average Daily Pedestrian Count– August 2014



| | Average Weekday Pedestrian Activity | | Average Weekend Pedestrian Activity | |
|-------------------------------|-------------------------------------|--------|-------------------------------------|--------|
| | 2014 | 2013 | 2014 | 2013 |
| 1100 Block of Chestnut | 12,905 | 10,536 | 8,126 | 7,059 |
| 1200 Block of Walnut | 19,966 | 14,030 | 19,656 | 12,652 |
| 1700 Block of Walnut | 24,804 | 23,307 | 23,754 | 24,787 |
| 800 Block of Market | 21,405 | 20,372 | 15,338 | 15,911 |
| Intersection of 12th & Market | 24,540 | 21,825 | 17,243 | 15,022 |
| 1500 Block of Chestnut | 25,854 | 20,501 | 18,538 | 15,781 |
| 1600 Block of Chestnut | 21,810 | 21,112 | 16,542 | 15,520 |



Average Daily Pedestrian Count by Time of Day
August 2014



| | 1100 Block of Chestnut | | 1200 Block of Walnut | | 1700 Block of Walnut | | 800 Block of Market | | Intersection of 12th & Market | | 1500 Block of Chestnut | | 1600 Block of Chestnut | |
|----------------|------------------------|------|----------------------|------|----------------------|-------|---------------------|-------|-------------------------------|-------|------------------------|-------|------------------------|-------|
| | 2014 | 2013 | 2014 | 2013 | 2014 | 2013 | 2014 | 2013 | 2014 | 2013 | 2014 | 2013 | 2014 | 2013 |
| Early Morning | 34 | 29 | 89 | 60 | 41 | 28 | 51 | 42 | 48 | 12 | 33 | 33 | 52 | 44 |
| Morning RH* | 250 | 176 | 407 | 294 | 430 | 388 | 554 | 543 | 778 | 709 | 449 | 364 | 384 | 353 |
| Late Morning | 602 | 467 | 725 | 482 | 901 | 821 | 1,032 | 962 | 1,271 | 1,164 | 822 | 719 | 756 | 777 |
| Lunch | 1,114 | 882 | 1,515 | 949 | 1,995 | 1,871 | 1,789 | 1,733 | 1,979 | 1,845 | 2,094 | 1,680 | 1,824 | 1,789 |
| Late Afternoon | 985 | 860 | 1,344 | 903 | 2,021 | 1,964 | 1,775 | 1,695 | 1,926 | 1,797 | 2,182 | 1,721 | 1,629 | 1,604 |
| Evening RH* | 755 | 684 | 1,410 | 975 | 1,968 | 1,918 | 1,560 | 1,566 | 1,740 | 1,682 | 2,019 | 1,623 | 1,545 | 1,554 |
| Evening | 367 | 306 | 1,035 | 722 | 1,110 | 1,045 | 460 | 436 | 514 | 280 | 823 | 645 | 790 | 700 |
| Late Night | 95 | 76 | 285 | 241 | 192 | 278 | 81 | 86 | 84 | 22 | 142 | 125 | 203 | 156 |

Time of Day Key

Early morning: 4am-6am

Morning RH: 6am-9am

Late Morning: 9am-11am

Lunch: 11am-2pm

Late Afternoon: 2pm-4pm

Evening RH: 4pm-7pm

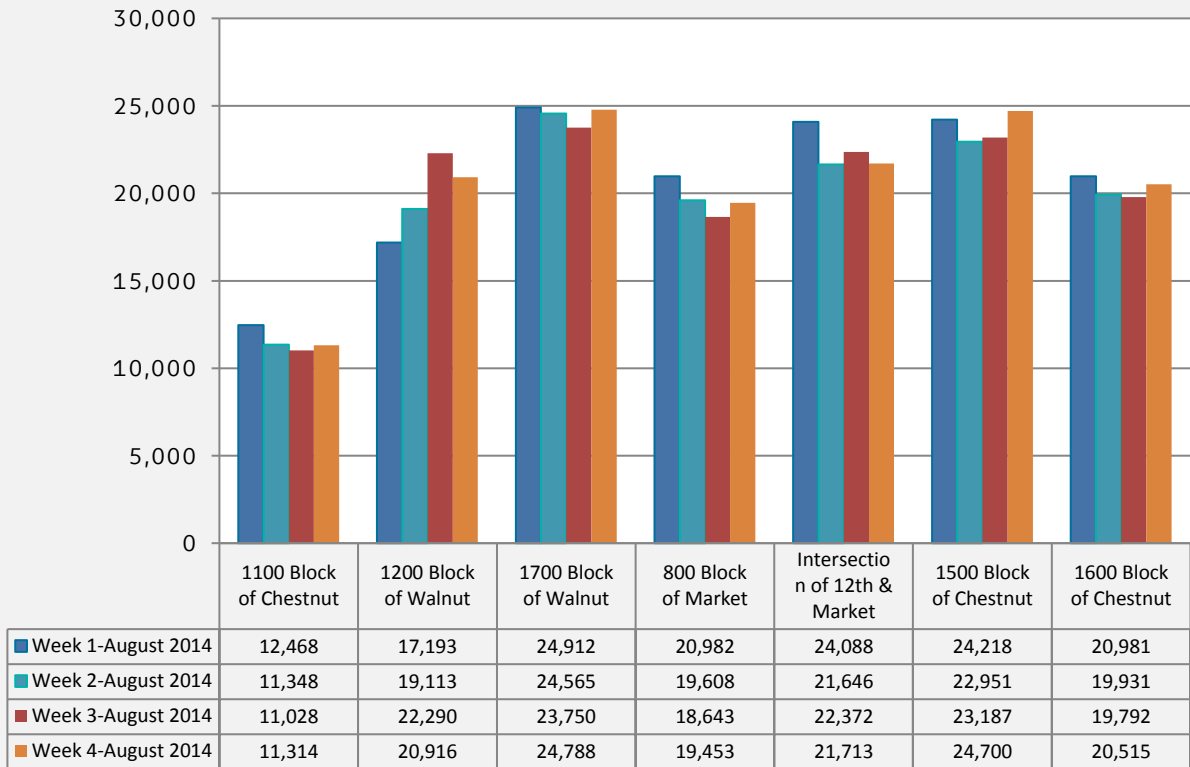
Evening: 7pm-11pm

Late Night: 11pm-4am

*N.B. RH stands for Rush Hour



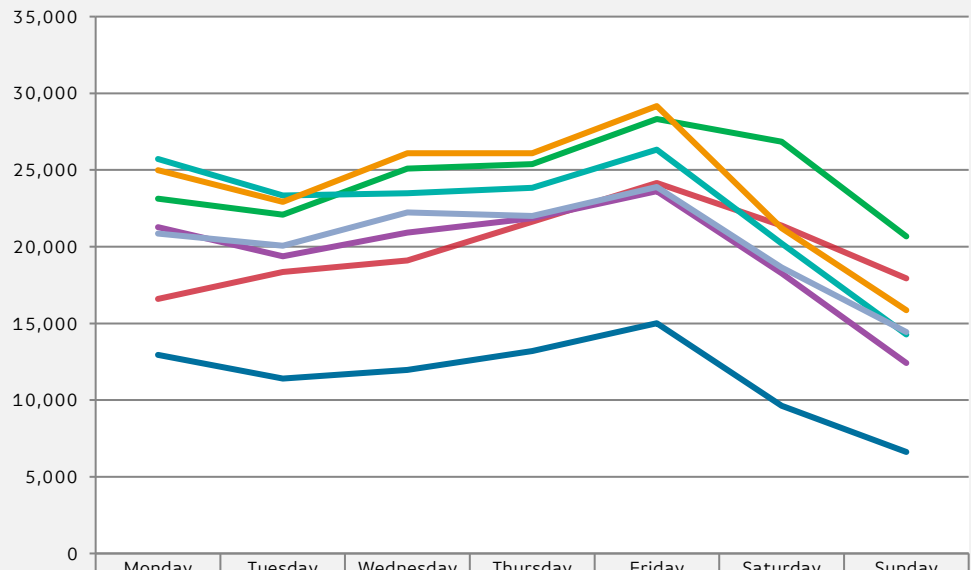
Average Pedestrian Count by Week-August 2014



| | Week 1-August 2014 | | Week 2-August 2014 | | Week 3-August 2014 | | Week 4-August 2014 | |
|------------------------------------------|--------------------|--------|--------------------|--------|--------------------|--------|--------------------|--------|
| | 2014 | 2013 | 2014 | 2013 | 2014 | 2013 | 2014 | 2013 |
| 1100 Block of Chestnut | 12,468 | 9,347 | 11,348 | 10,009 | 11,028 | 9,551 | 11,314 | 9,263 |
| 1200 Block of Walnut | 17,193 | 13,352 | 19,113 | 13,787 | 22,290 | 13,979 | 20,916 | 13,427 |
| 1700 Block of Walnut | 24,912 | 23,229 | 24,565 | 24,282 | 23,750 | 24,450 | 24,788 | 22,957 |
| 800 Block of Market | 20,982 | 19,120 | 19,608 | 19,433 | 18,643 | 19,224 | 19,453 | 18,612 |
| Intersection of 12th & Market | 24,088 | 19,295 | 21,646 | 19,630 | 22,372 | 20,078 | 21,713 | 20,522 |
| 1500 Block of Chestnut | 24,218 | 19,164 | 22,951 | 19,209 | 23,187 | 19,538 | 24,700 | 18,698 |
| 1600 Block of Chestnut | 20,981 | 22,876 | 19,931 | 18,065 | 19,792 | 18,201 | 20,515 | 18,917 |



Average Daily Pedestrian Count by Day of the Week – August 2014



| | Monday | Tuesday | Wednesday | Thursday | Friday | Saturday | Sunday |
|-------------------------------|--------|---------|-----------|----------|--------|----------|--------|
| 1100 Block of Chestnut | 12,957 | 11,404 | 11,960 | 13,196 | 15,008 | 9,637 | 6,616 |
| 1200 Block of Walnut | 16,594 | 18,359 | 19,105 | 21,620 | 24,154 | 21,386 | 17,926 |
| 1700 Block of Walnut | 23,132 | 22,079 | 25,098 | 25,389 | 28,323 | 26,836 | 20,671 |
| 800 Block of Market | 21,265 | 19,365 | 20,925 | 21,854 | 23,617 | 18,261 | 12,416 |
| Intersection of 12th & Market | 25,720 | 23,342 | 23,478 | 23,834 | 26,325 | 20,210 | 14,276 |
| 1500 Block of Chestnut | 24,983 | 22,929 | 26,098 | 26,092 | 29,168 | 21,218 | 15,859 |
| 1600 Block of Chestnut | 20,856 | 20,055 | 22,241 | 22,005 | 23,893 | 18,648 | 14,436 |