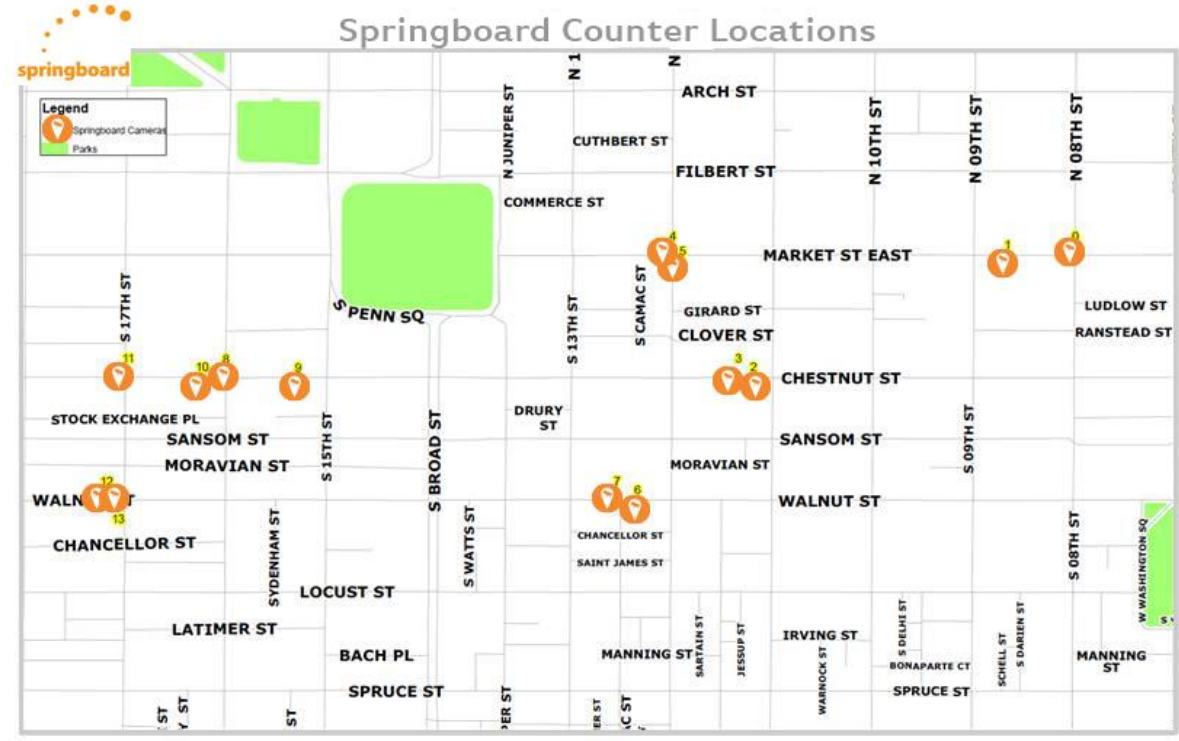


Map of Counting Locations



Example Camera Positions





Headlines for September 2013

- Pedestrian activity in Center City Philadelphia was ▼ -2.5% compared to last month
- Pedestrian activity across New York was ▼ -9.3% compared to last month
- Pedestrian activity in Center City Philadelphia was ▲ 1.4% compared to same month last year
- Pedestrian activity across New York was ▲ 16.2% compared to same month last year

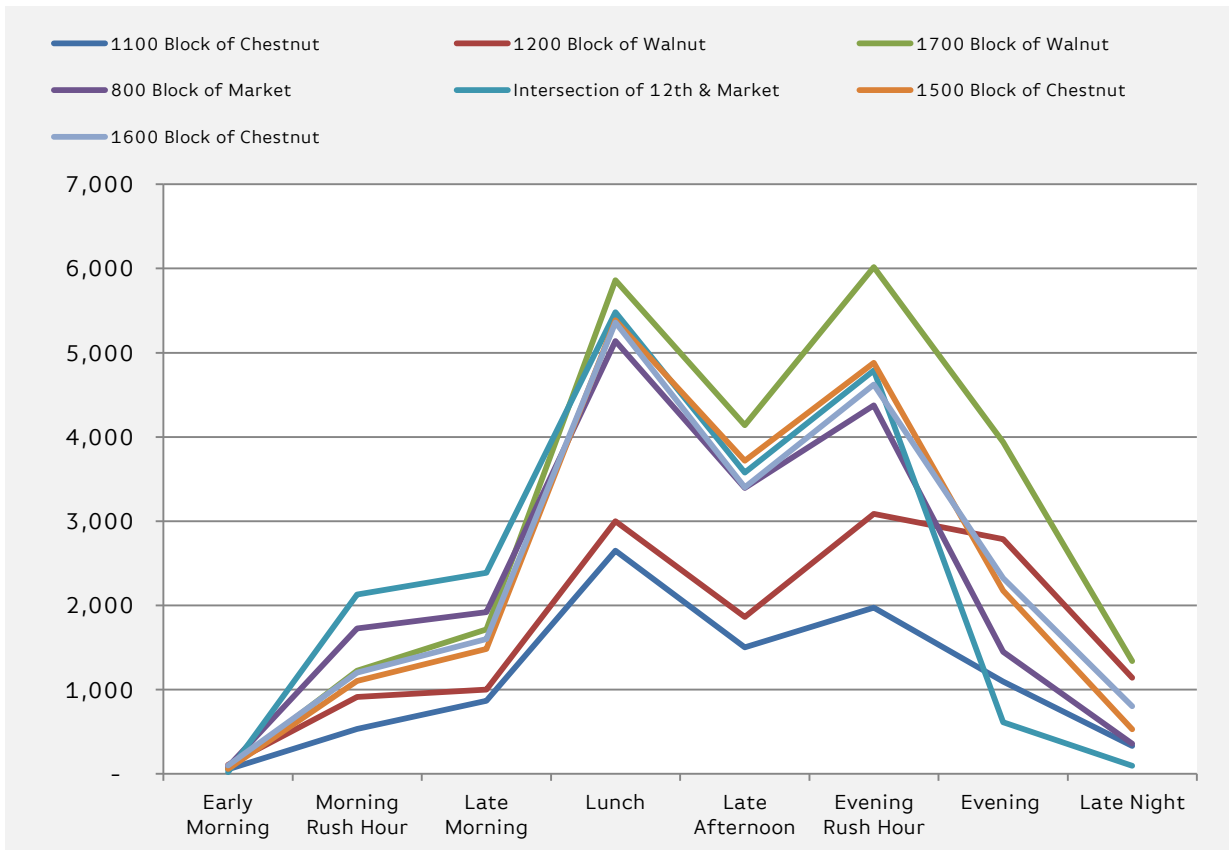
Average Daily Pedestrian Count – Sept 2013



	Average Weekday Pedestrian Activity		Average Weekend Pedestrian Activity	
	2013	2012	2013	2012
1100 Block of Chestnut	9,810	10,971	7,018	7,763
1200 Block of Walnut	14,107	13,016	13,384	12,011
1700 Block of Walnut	23,281	23,668	26,817	26,482
800 Block of Market	19,822	19,381	15,007	14,062
Intersection of 12th & Market	20,768	20,892	14,906	14,127
1500 Block of Chestnut	20,526	18,813	16,339	14,483
1600 Block of Chestnut	20,287	21,426	17,223	16,841



Average Daily Pedestrian Count by Time of Day
September 2013



	1100 Block of Chestnut		1200 Block of Walnut		1700 Block of Walnut		800 Block of Market		Intersection of 12th & Market		1500 Block of Chestnut		1600 Block of Chestnut	
	2013	2012	2013	2012	2013	2012	2013	2012	2013	2012	2013	2012	2013	2012
Early Morning	55	86	107	88	58	77	84	95	20	36	58	47	101	86
Morning RH*	532	626	913	893	1,227	1,346	1,727	1,796	2,127	2,402	1,102	1,026	1,202	1,156
Late Morning	868	1,057	999	948	1,717	1,863	1,919	1,928	2,387	2,465	1,482	1,455	1,599	1,502
Lunch	2,650	2,881	2,998	2,834	5,860	6,082	5,138	4,769	5,481	5,526	5,385	4,991	5,361	5,502
Late Afternoon	1,503	1,831	1,865	1,863	4,138	4,293	3,395	3,417	3,577	3,695	3,718	3,539	3,401	3,781
Evening RH*	1,974	2,148	3,088	2,943	6,016	5,944	4,376	4,114	4,790	4,359	4,880	4,447	4,622	4,844
Evening	1,097	1,097	2,788	2,270	3,938	3,618	1,448	1,409	614	387	2,174	1,641	2,322	2,449
Late Night	333	330	1,142	890	1,338	1,248	359	331	95	87	530	429	804	796

Time of Day Key

Early morning: 4am-6am

Morning RH: 6am-9am

Late Morning: 9am-11am

Lunch: 11am-2pm

Late Afternoon: 2pm-4pm

Evening RH: 4pm-7pm

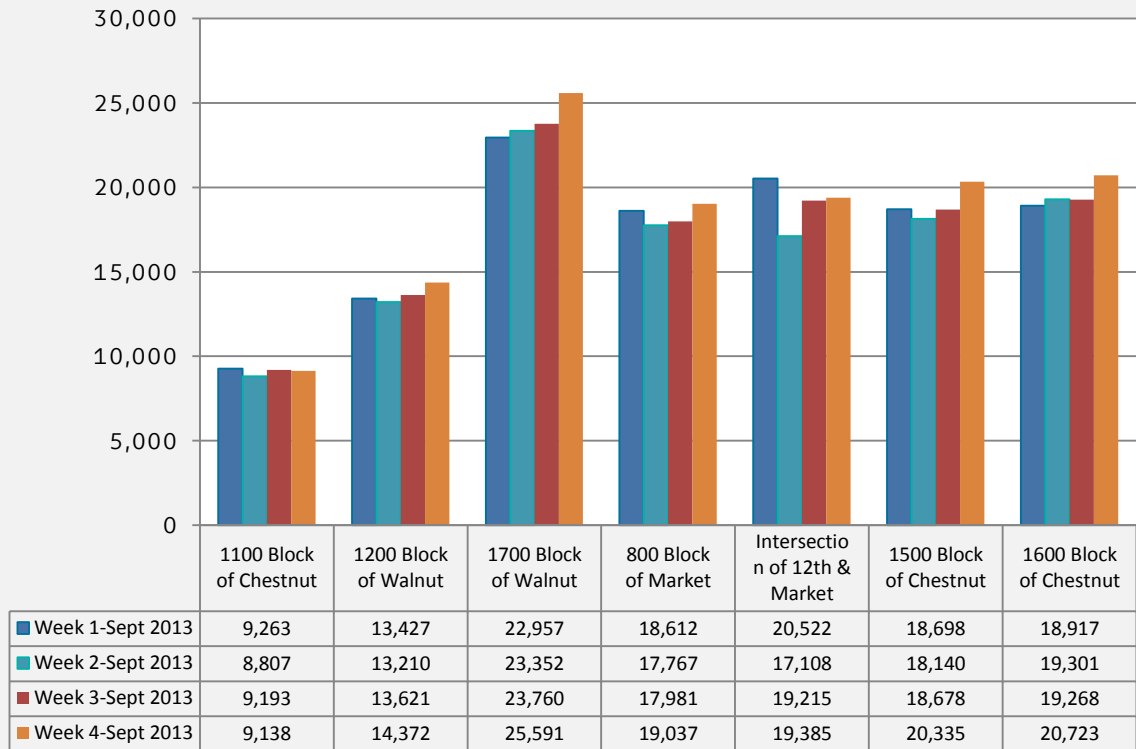
Evening: 7pm-11pm

Late Night: 11pm-4am

*N.B. RH stands for Rush Hour



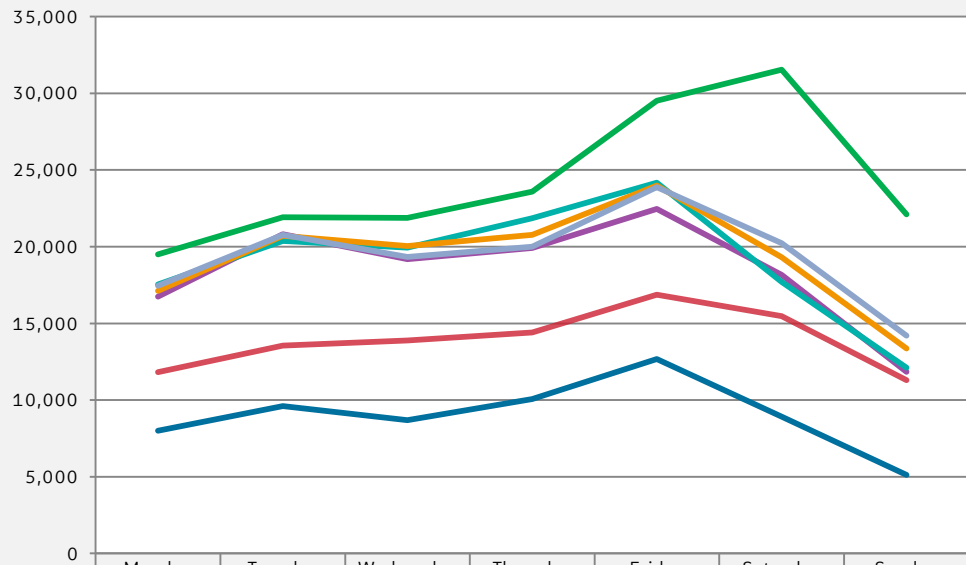
Average Pedestrian Count by Week-September 2013



	Week 1-Sept 2013		Week 2-Sept 2013		Week 3-Sept 2013		Week 4-Sept 2013		Week 5-Sept 2013	
	2013	2012	2013	2012	2013	2012	2013	2012	2013	2012
1100 Block of Chestnut	9,263	10,494	8,807	8,578	9,193	11,618	9,138	9,899	8,662	9,684
1200 Block of Walnut	13,427	12,381	13,210	11,548	13,621	13,972	14,372	12,788	14,870	12,957
1700 Block of Walnut	22,957	24,241	23,352	21,440	23,760	27,072	25,591	24,908	25,796	24,699
800 Block of Market	18,612	18,446	17,767	14,652	17,981	20,448	19,037	17,909	18,837	17,850
Intersection of 12th & Market	20,522	19,556	17,108	16,244	19,215	21,083	19,385	18,990	19,235	18,922
1500 Block of Chestnut	18,698	19,598	18,140	16,617	18,678	19,580	20,335	17,327	20,798	14,758
1600 Block of Chestnut	18,917	23,269	19,301	17,226	19,268	20,261	20,723	18,352	18,850	21,473



Average Daily Pedestrian Count by Day of the Week – September 2013



	Monday	Tuesday	Wednesday	Thursday	Friday	Saturday	Sunday
1100 Block of Chestnut	8,009	9,606	8,689	10,070	12,675	8,917	5,119
1200 Block of Walnut	11,826	13,550	13,891	14,402	16,866	15,465	11,302
1700 Block of Walnut	19,492	21,925	21,886	23,588	29,513	31,536	22,099
800 Block of Market	16,736	20,807	19,195	19,908	22,467	18,171	11,843
Intersection of 12th & Market	17,534	20,367	19,926	21,847	24,164	17,708	12,105
1500 Block of Chestnut	17,124	20,698	20,049	20,764	23,994	19,312	13,367
1600 Block of Chestnut	17,459	20,778	19,321	19,998	23,881	20,238	14,207