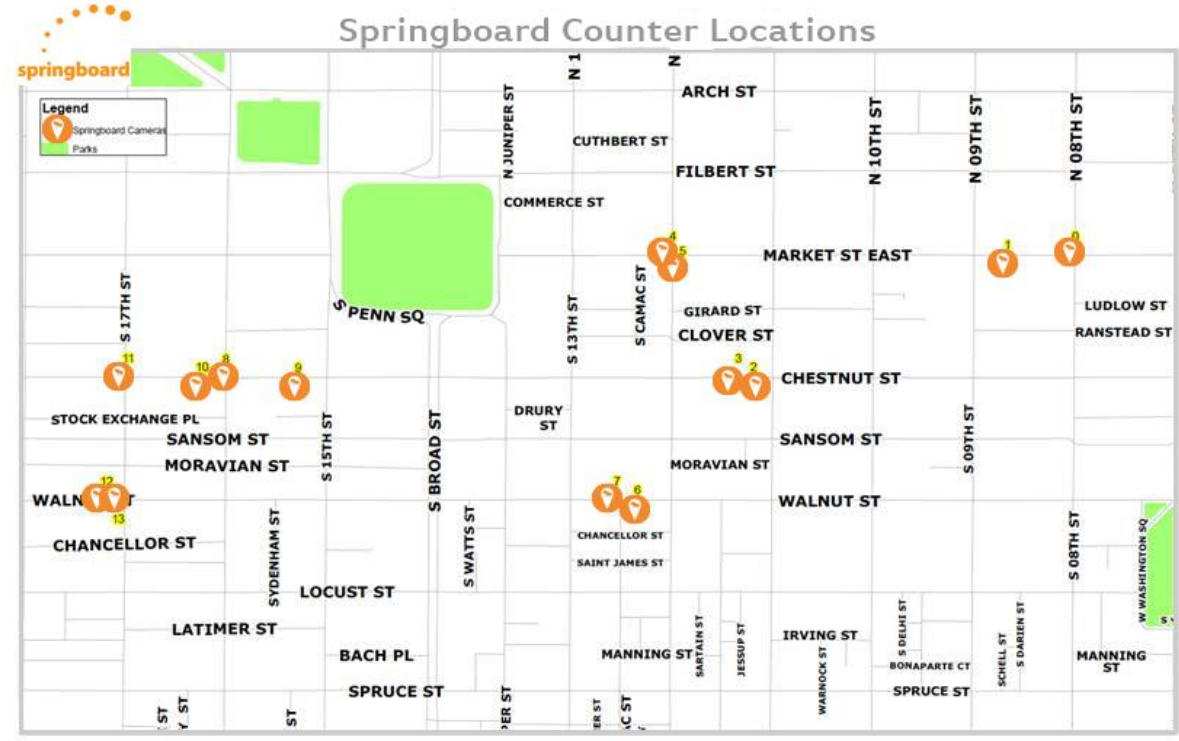


Map of Counting Locations



Example Camera Positions

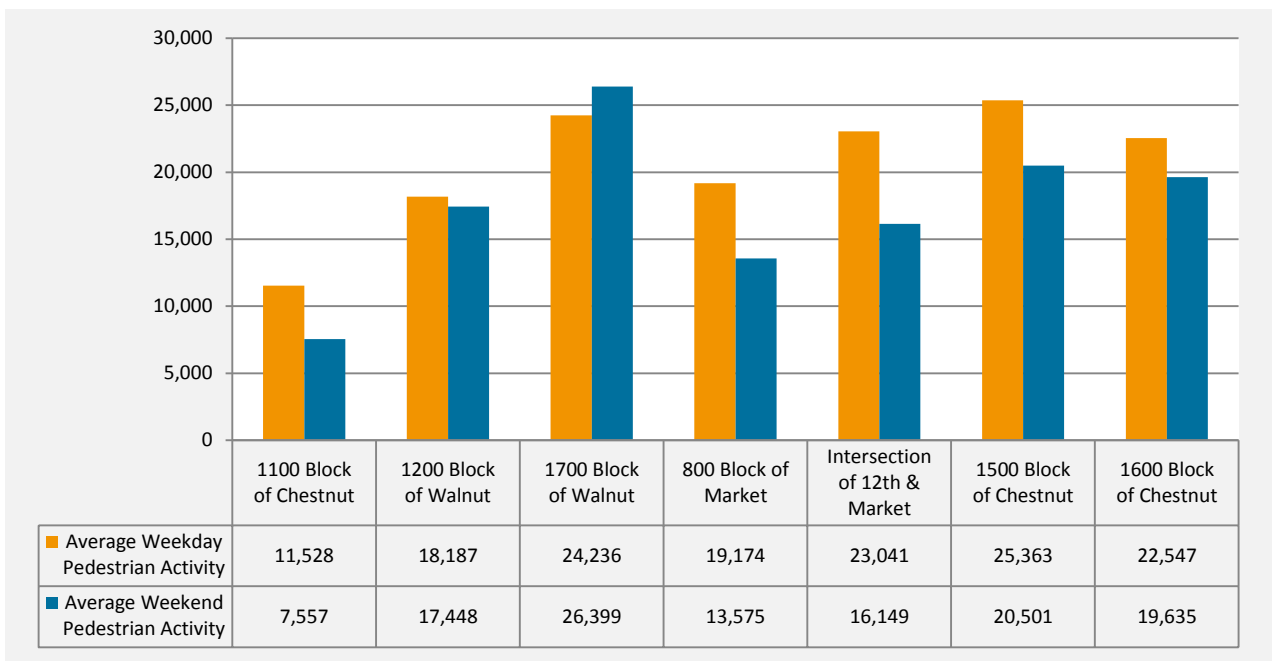




Headlines for September 2014

- Pedestrian activity in Center City Philadelphia was ▼ -3.2% compared to last month
- Pedestrian activity across New York was ▲ 7.0% compared to last month
- Pedestrian activity in Center City Philadelphia was ▲ 10.3% compared to same month last year
- Pedestrian activity across New York was ▼ -14.3% compared to same month last year

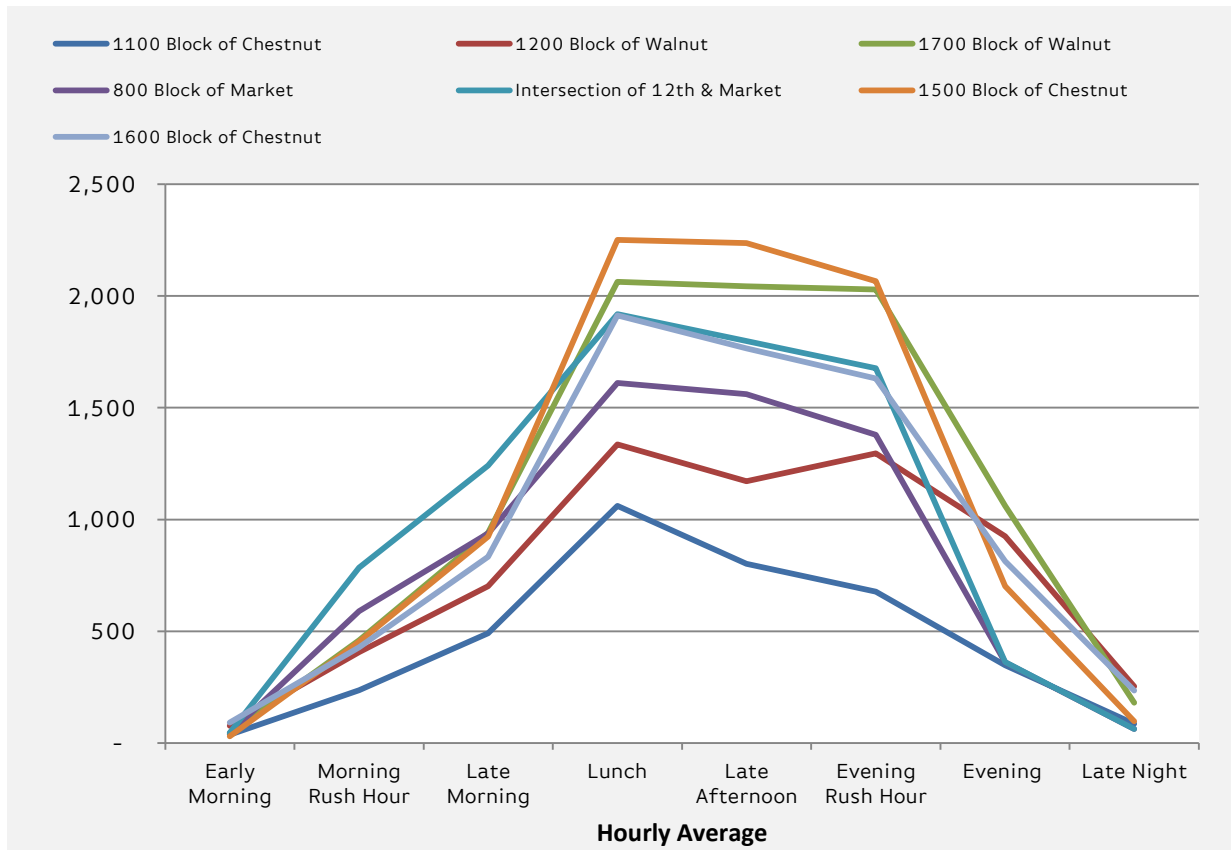
Average Daily Pedestrian Count– Sept 2014



	Average Weekday Pedestrian Activity		Average Weekend Pedestrian Activity	
	2014	2013	2014	2013
1100 Block of Chestnut	11,528	10,007	7,557	7,064
1200 Block of Walnut	18,187	14,405	17,448	13,838
1700 Block of Walnut	24,236	23,787	26,399	27,035
800 Block of Market	19,174	20,068	13,575	14,251
Intersection of 12th & Market	23,041	21,067	16,149	14,004
1500 Block of Chestnut	25,363	21,188	20,501	16,204
1600 Block of Chestnut	22,547	20,530	19,635	16,378



Average Daily Pedestrian Count by Time of Day
September 2014



	1100 Block of Chestnut		1200 Block of Walnut		1700 Block of Walnut		800 Block of Market		Intersection of 12th & Market		1500 Block of Chestnut		1600 Block of Chestnut	
	2014	2013	2014	2013	2014	2013	2014	2013	2014	2013	2014	2013	2014	2013
Early Morning	36	27	77	52	43	29	44	42	46	11	29	28	91	47
Morning RH*	236	180	407	311	459	422	590	584	784	729	452	381	428	401
Late Morning	491	440	701	517	941	878	937	977	1,241	1,228	924	760	833	782
Lunch	1,060	906	1,336	1,027	2,064	2,010	1,611	1,739	1,919	1,857	2,251	1,884	1,914	1,803
Late Afternoon	802	767	1,171	952	2,043	2,091	1,560	1,666	1,799	1,757	2,238	1,894	1,765	1,698
Evening RH*	678	670	1,295	1,062	2,030	2,045	1,379	1,443	1,677	1,578	2,066	1,664	1,630	1,553
Evening	347	279	925	714	1,061	990	361	350	363	121	701	531	813	568
Late Night	85	64	253	228	179	266	62	67	62	17	97	98	234	149

Time of Day Key

Early morning: 4am-6am

Morning RH: 6am-9am

Late Morning: 9am-11am

Lunch: 11am-2pm

Late Afternoon: 2pm-4pm

Evening RH: 4pm-7pm

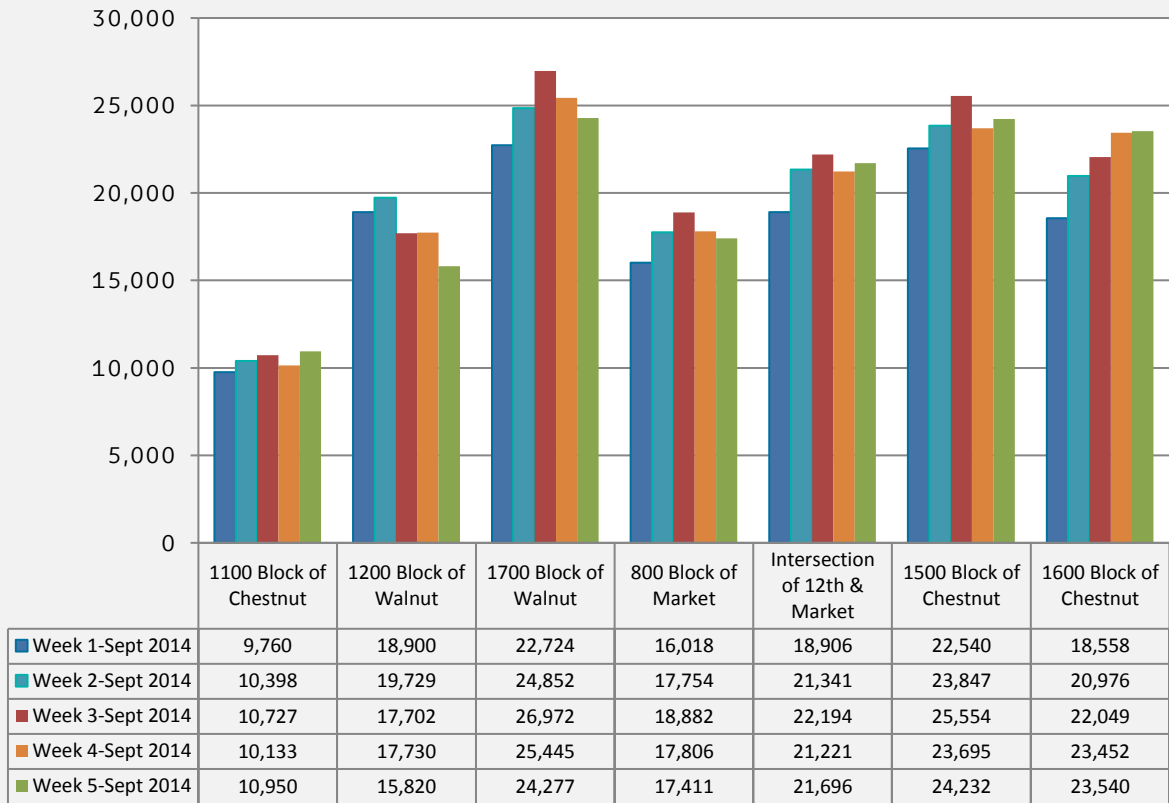
Evening: 7pm-11pm

Late Night: 11pm-4am

*N.B. RH stands for Rush Hour



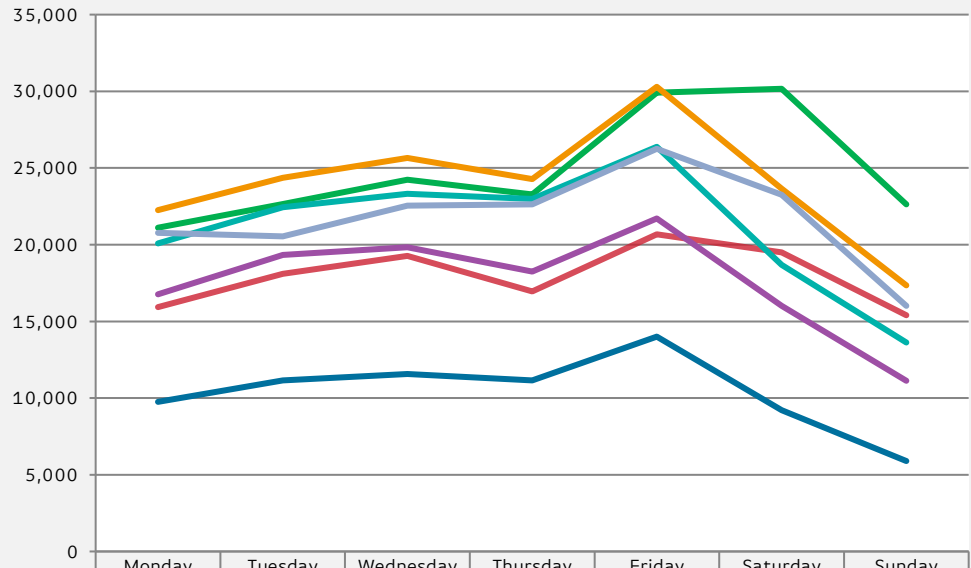
Average Pedestrian Count by Week-Sept
2014



	Week 1-Sept 2014		Week 2-Sept 2014		Week 3-Sept 2014		Week 4-Sept 2014		Week 5-Sept 2014	
	2014	2013	2014	2013	2014	2013	2014	2013	2014	2013
1100 Block of Chestnut	9,760	8,807	10,398	9,193	10,727	9,138	10,133	8,662	10,950	10,030
1200 Block of Walnut	18,900	13,210	19,729	13,621	17,702	14,372	17,730	14,870	15,820	15,142
1700 Block of Walnut	22,724	23,352	24,852	23,760	26,972	25,591	25,445	25,796	24,277	25,075
800 Block of Market	16,018	17,767	17,754	17,981	18,882	19,037	17,806	18,837	17,411	18,409
Intersection of 12th & Market	18,906	17,108	21,341	19,215	22,194	19,385	21,221	19,235	21,696	20,302
1500 Block of Chestnut	22,540	18,140	23,847	18,678	25,554	20,335	23,695	20,798	24,232	20,872
1600 Block of Chestnut	18,558	19,301	20,976	19,268	22,049	20,723	23,452	18,850	23,540	18,576



Average Daily Pedestrian Count by Day of the Week – Sept 2014



	Monday	Tuesday	Wednesday	Thursday	Friday	Saturday	Sunday
1100 Block of Chestnut	9,759	11,161	11,560	11,156	14,005	9,218	5,895
1200 Block of Walnut	15,934	18,106	19,271	16,948	20,677	19,497	15,399
1700 Block of Walnut	21,107	22,644	24,235	23,283	29,912	30,163	22,635
800 Block of Market	16,758	19,337	19,824	18,240	21,708	16,024	11,127
Intersection of 12th & Market	20,088	22,445	23,313	22,977	26,381	18,674	13,623
1500 Block of Chestnut	22,246	24,361	25,648	24,268	30,291	23,653	17,348
1600 Block of Chestnut	20,764	20,552	22,548	22,620	26,250	23,259	16,012