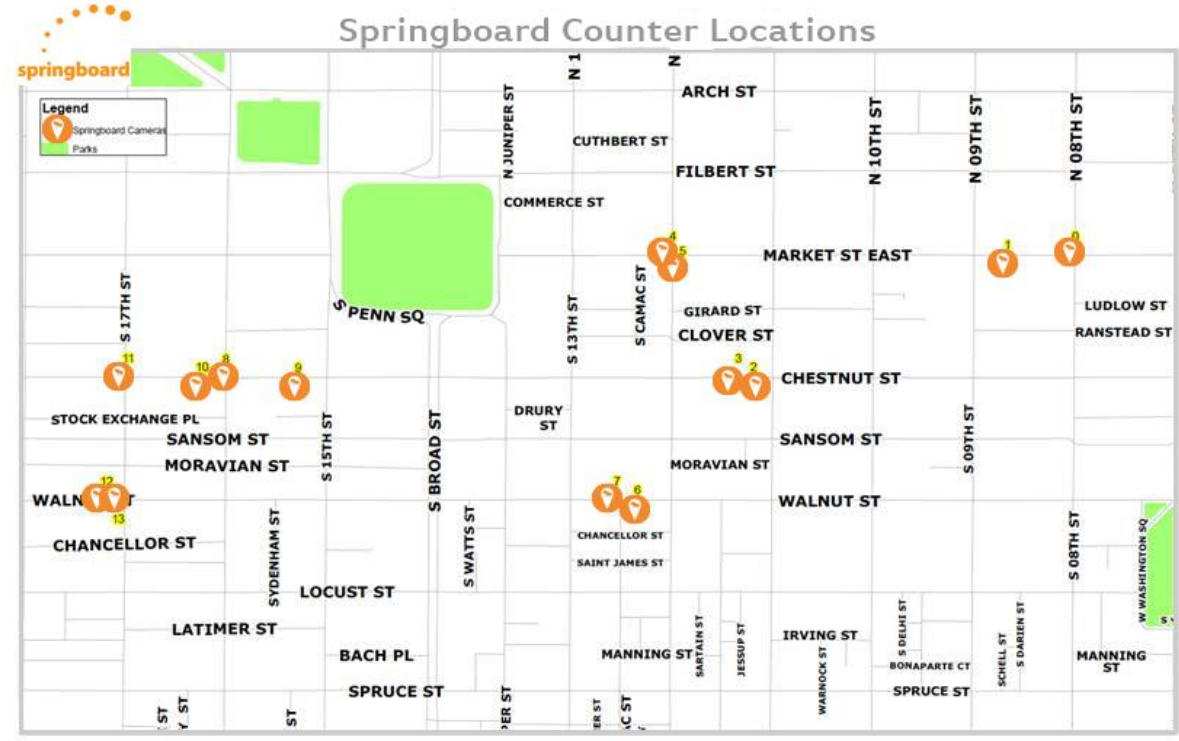


Map of Counting Locations



Example Camera Positions





Headlines for October 2014

- Pedestrian activity in Center City Philadelphia was ▼ -0.3% compared to last month
- Pedestrian activity across New York was ▲ 4.9% compared to last month
- Pedestrian activity in Center City Philadelphia was ▲ 20.9% compared to same month last year
- Pedestrian activity across New York was ▼ -13.3% compared to same month last year

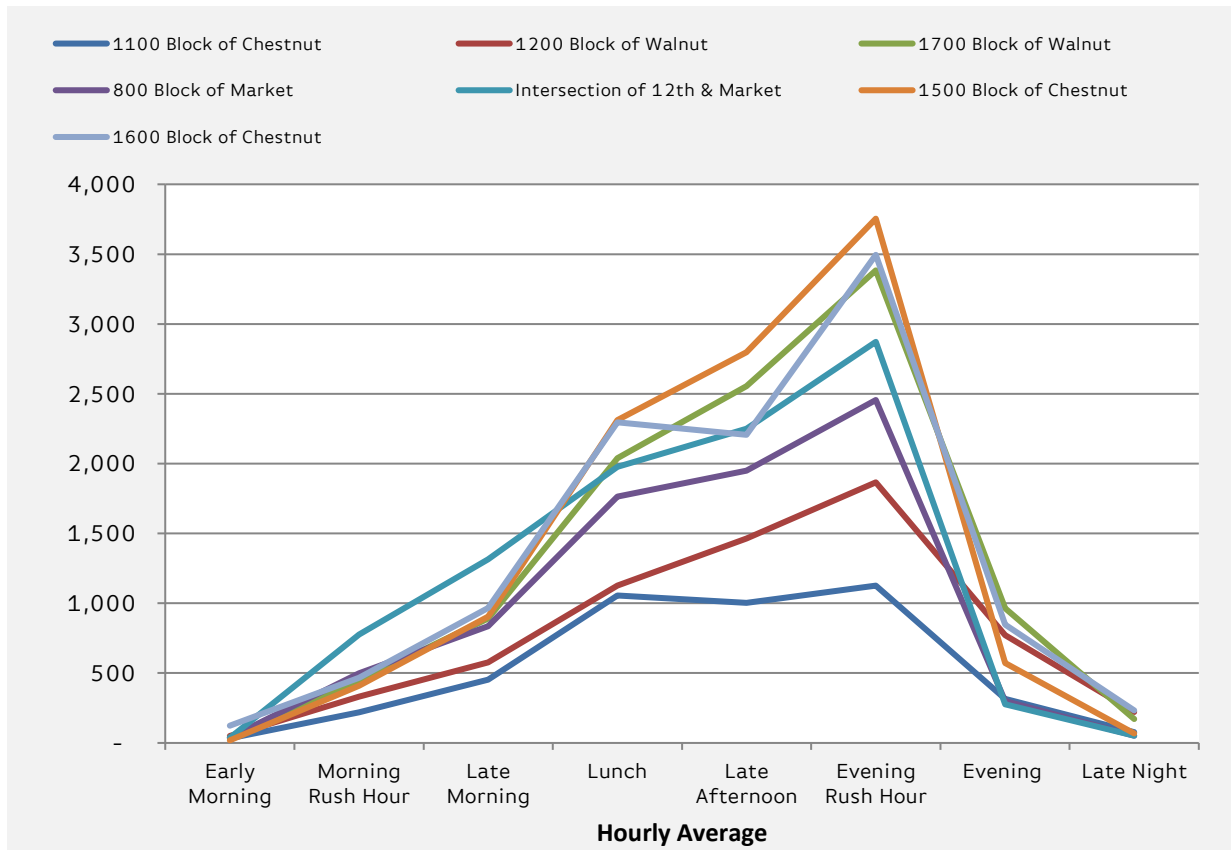
Average Daily Pedestrian Count– Oct 2014



	Average Weekday Pedestrian Activity		Average Weekend Pedestrian Activity	
	2014	2013	2014	2013
1100 Block of Chestnut	10,947	8,340	7,004	5,849
1200 Block of Walnut	15,398	13,285	15,463	15,832
1700 Block of Walnut	23,648	21,934	25,494	27,130
800 Block of Market	18,912	16,665	13,468	12,959
Intersection of 12th & Market	23,077	19,610	15,620	14,827
1500 Block of Chestnut	25,495	18,819	19,910	14,993
1600 Block of Chestnut	25,040	17,596	26,626	14,616



Average Daily Pedestrian Count by Time of Day
October 2014



	1100 Block of Chestnut		1200 Block of Walnut		1700 Block of Walnut		800 Block of Market		Intersection of 12th & Market		1500 Block of Chestnut		1600 Block of Chestnut	
	2014	2013	2014	2013	2014	2013	2014	2013	2014	2013	2014	2013	2014	2013
Early Morning	33	25	50	68	40	25	39	36	36	10	19	27	124	35
Morning RH*	219	164	332	308	446	395	498	449	777	658	410	357	466	290
Late Morning	454	411	577	502	890	839	836	771	1,314	1,258	905	714	966	590
Lunch	1,055	643	1,126	973	2,039	1,958	1,763	1,576	1,978	1,869	2,311	1,715	2,295	1,560
Late Afternoon	1,002	669	1,463	947	2,554	2,042	1,950	1,455	2,249	1,755	2,797	1,684	2,206	1,490
Evening RH*	1,126	592	1,866	1,045	3,384	1,960	2,455	1,223	2,872	1,414	3,754	1,572	3,495	1,436
Evening	316	237	771	695	964	871	300	266	276	72	572	384	846	507
Late Night	76	55	221	245	171	237	51	55	52	17	68	81	232	126

Time of Day Key

Early morning: 4am-6am

Morning RH: 6am-9am

Late Morning: 9am-11am

Lunch: 11am-2pm

Late Afternoon: 2pm-4pm

Evening RH: 4pm-7pm

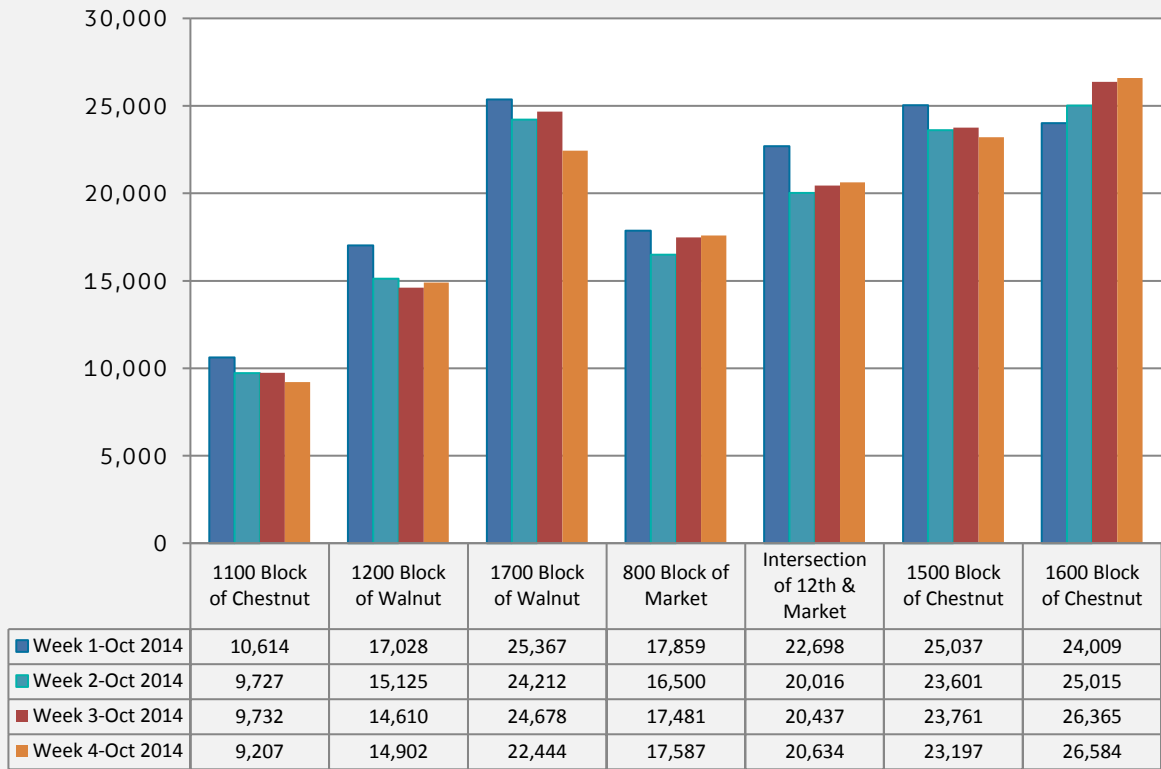
Evening: 7pm-11pm

Late Night: 11pm-4am

*N.B. RH stands for Rush Hour



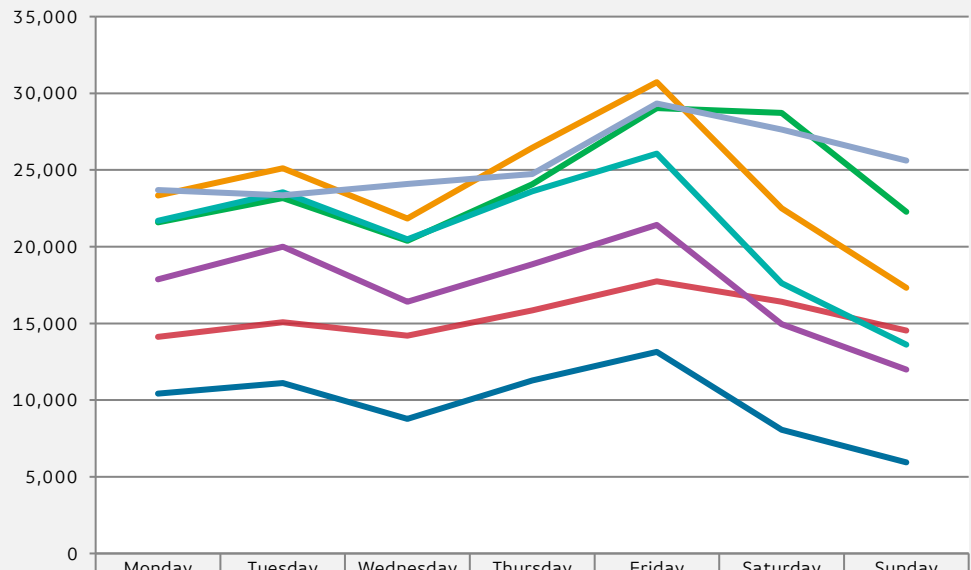
Average Pedestrian Count by Week-Oct
2014



	Week 1-Oct 2014		Week 2-Oct 2014		Week 3-Oct 2014		Week 4-Oct 2014	
	2014	2013	2014	2013	2014	2013	2014	2013
1100 Block of Chestnut	10,614	7,006	9,727	7,452	9,732	7,858	9,207	8,198
1200 Block of Walnut	17,028	16,653	15,125	13,756	14,610	12,502	14,902	13,140
1700 Block of Walnut	25,367	22,152	24,212	24,775	24,678	23,430	22,444	23,316
800 Block of Market	17,859	13,581	16,500	16,936	17,481	16,283	17,587	15,626
Intersection of 12th & Market	22,698	17,106	20,016	18,947	20,437	18,796	20,634	18,125
1500 Block of Chestnut	25,037	16,415	23,601	19,122	23,761	17,646	23,197	17,721
1600 Block of Chestnut	24,009	15,667	25,015	17,613	26,365	16,986	26,584	16,712



Average Daily Pedestrian Count by Day of the Week –Oct 2014



	Monday	Tuesday	Wednesday	Thursday	Friday	Saturday	Sunday
1100 Block of Chestnut	10,412	11,118	8,781	11,282	13,142	8,069	5,939
1200 Block of Walnut	14,121	15,068	14,208	15,851	17,742	16,401	14,525
1700 Block of Walnut	21,576	23,165	20,385	24,079	29,034	28,718	22,271
800 Block of Market	17,878	19,994	16,412	18,855	21,421	14,949	11,988
Intersection of 12th & Market	21,689	23,542	20,485	23,602	26,067	17,628	13,612
1500 Block of Chestnut	23,343	25,118	21,829	26,457	30,727	22,501	17,319
1600 Block of Chestnut	23,687	23,350	24,088	24,740	29,335	27,644	25,609